

k•tek™



GYNECOLOGY • UROLOGY • LAPAROSCOPY • SPINE • ORTHOPAEDICS • ROBOTICS

Patient Positioning Product Catalog

About KTEK



Kyra Medical, with their KTEK brand for Strategic Partners, is a medical manufacturer of innovative patient positioning products for the operating room. KYRA produces the next generation of lithotomy stirrups, disposables, armboards and spine positioners focused on infection control, the reduction of cross-contamination and safety for OR staff and today's modern patient.

KTEK's innovative line of stirrups are recognized for their fabric-free straps and fitment for today's larger BMI patients and the elimination of pinch-points found on other products. KTEK products are designed to be repaired on-site by your Biomed department so that downtime is greatly reduced versus sending items offsite for lengthy and costly repairs.

Order Information

United States

Toll-free	1-888-611-KYRA (5972)
Phone	1-508-936-3550
Fax	1-617-977-KYRA (5972)
Email	customers@kyramedical.com

Outside the US

Phone	1-508-936-3550
Fax	1-617-977-KYRA (5972)
Email	customers@kyramedical.com

Kyra Medical, 102 Otis Street, Northborough, MA 01532 USA
ktekmed.com

Kyra Medical and KTEK branded products are designed and manufactured near Boston, MA USA



Table of Contents

04 Stirrups/Leg Holders

- 05 KTEK Comfort™ Stirrups
- 06 KTEK 400 Stirrups
- 06 KTEK 250 Stirrups
- 07 Leg Holders

08 Clamps

- 08 Stirrup Clamps - Blade
- 08 Accessory Clamps - Round & Rectangular

10 General Accessories

- 10 Armboards & Pads
- 11 Patient Positioning
- 13 Urology
- 14 Arm Positioners
- 20 Patient Transfer Boards

17 Spine

- 16 KTEK Curve™ Spine Frame
- 18 Disposables

20 Orthopaedics

- 19 Leg Holders
- 19 Disposables

21 Index

The KTEK™ Family of Stirrups

All KTEK stirrups provide unparalleled pelvic site access, larger boot sizing and better infection control.



Fabric-free straps

- Medical grade silicone straps snap-in securely
- Strong but flexible and easy to clean
- Non-tear propagating material
- Tested over 27,000 cycles

Curved rod provides more range of motion and working space

- The unique patent-pending design provides 22° more lithotomy range of motion than traditional stirrups
- Great for robotic surgery
- Design protects the gas spring for longer life



Larger boot and more padding for today's patients

- Fits patient's legs into the boots, not on top of the boot
- No exposed hard plastic edges
- Flexible lateral fin



The KTEK Comfort™ Family of Stirrups

KTEK Comfort 350 Stirrups

KTEK3000/KTEK3100

Stirrup Weight: 13.2 lbs. (6 kg)

Patient Weight Capacity: 350 lbs. (159 kg)

WHAT'S INCLUDED



OR



KTEK3000
Comfort 350 Stirrups
w/hook & loop straps
1 Pair Included

KTEK3100
Comfort 350 Stirrups
w/Secure-Lok™ straps
1 Pair Included

WHAT'S REQUIRED



Choose Rail Type:
KTEK4100 (US) OR KTEK4200 (EU)
Secure-Release™ Clamp*
2 Required

WHAT'S OPTIONAL



KTEK1000
Stirrup Cart



KTEK Comfort Stirrups

KTEK5000/KTEK5100

Stirrup Weight: 14.6 lbs. (6.6 kg)

Patient Weight Capacity: 500 lbs. (227 kg)

WHAT'S INCLUDED



OR



KTEK5000
Comfort 500 Stirrups
w/hook & loop straps
1 Pair Included

KTEK5100
Comfort 500 Stirrups
w/Secure-Lok™ straps
1 Pair Included

WHAT'S REQUIRED



Choose Rail Type:
KTEK4100 (US) OR KTEK4200 (EU)
Secure-Release™ Clamp*
2 Required

WHAT'S OPTIONAL



KTEK1000
Stirrup Cart



KTEK Comfort 800 Stirrups

KTEK8100

Stirrup Weight: 14.6 lbs. (6.6 kg)

Patient Weight Capacity: 800 lbs. (363 kg)

WHAT'S INCLUDED



WHAT'S REQUIRED



Choose Rail Type:
KTEK4100 (US) OR KTEK4200 (EU)
Secure-Release™ Clamp*
2 Required

WHAT'S OPTIONAL



KTEK1000
Stirrup Cart



*Specify Rail Type: US, EU, UK, JP, DEN. See Page 9.

KTEK 400 Stirrups

KTEK7100

The KTEK 400 stirrup is designed for customers that prefer a non-finned boot. Classic stirrup with updates for robotic surgery. KTEK400 stirrups can support patients up to a 400 lbs. (181 kg) weight capacity. It has a premium stainless-steel gas shock and a boot with ¾" of supportive boot padding. Easy to clean durable silicone straps. Pads included. Sold in pairs.

Patient Weight Capacity: 400 lbs. (181 kg)

Stirrup Weight: 12.2 lbs. (5.5 kg)

WHAT'S INCLUDED



KTEK7100
KTEK 400 Stirrups
w/Secure-Lok™ straps
1 Pair Included

WHAT'S REQUIRED



Choose Rail Type:
KTEK4100 (US) OR KTEK4200 (EU)
Secure-Release™ Clamp*
2 Required

WHAT'S OPTIONAL



KTEK1000
Stirrup Cart



KTEK 250 Stirrups

KTEK7810

A junior stirrup designed for patients aged 6-12 years old but also effective in smaller/lighter adults weighing up to 250 lbs. The non-finned boot has ¾" of supportive boot padding and larger ankle well for more secure fit. Easy to clean durable silicone straps. Pads included. Sold in pairs.

Patient Weight Capacity: 250 lbs. (113 kg)

Stirrup Weight: 10.2 lbs. (4.6 kg)

WHAT'S INCLUDED



KTEK7810
KTEK 250 Stirrups
w/Secure-Lok™ straps
1 Pair Included

WHAT'S REQUIRED



Choose Rail Type:
KTEK4100 (US) OR KTEK4200 (EU)
Secure-Release™ Clamp*
2 Required

WHAT'S OPTIONAL



KTEK1000
Stirrup Cart

*Specify Rail Type: US, EU, UK, JP, DEN. See Page 8.

Products covered by one or more issued or pending patents including: Pat. US 11,020,303, Pat. US 10,952,914, Pat. US 10,869,801, Pat. US 11,013,652.



Knee Crutch, Lift Assist

KTEK7305

Designed with innovative gas spring, the knee crutch uses lift assist to ease lithotomy positioning. Pads included. Sold in pairs.

Patient Weight Capacity: 500 lbs. (227 kg)

Device Weight: 9.6 lbs (4.6 kg)

WHAT'S INCLUDED



KTEK7305
Knee Crutch, Lift Assist
1 Pair Included

WHAT'S REQUIRED



Choose Rail Type:

KTEK4100 (US) OR KTEK4200 (EU)

Secure-Release™ Clamp*
2 Required



Knee Crutch, Goepel

KTEK7300

Used for lithotomy positioning during urology, laparoscopy, cystoscopy and gynecology procedures. Pads included. Sold in pairs.

Patient Weight Capacity: 500 lbs. (227 kg)

Device Weight: 6.6 lbs. (3.0 kg)

WHAT'S INCLUDED



KTEK7300
Knee Crutches, Goepel
1 Pair Included

WHAT'S REQUIRED



KTEK4800
Round Post Rail Clamp*
2 Required



KTEK Simple Stirrups

KTEK7860

Non-finned stirrup boot sized for today's patients, simple working mechanism. Pad included. Sold in pairs.

Patient Weight Capacity: 600 lbs. (272 kg)

WHAT'S INCLUDED



KTEK7860
Simple Stirrups
1 Pair Included

WHAT'S REQUIRED



KTEK4800
Round Post Rail Clamp*
2 Required

*Specify Rail Type: US, EU, UK, JP, DEN. See Page 8.

Stirrup Clamps - Blade



Secure-Release™ Clamp

KTEK4100

Mounts and locks anywhere on standard OR table rail. Prevents false rail engagement. Push button safely releases clamp. Autoclavable.

Specify Rail Type

US KTEK4100
EU KTEK4200

UK KTEK4300
DY KTEK4400

JP KTEK4500



Select Blade Clamp

KTEK4600

All metal design, clamp mounts and locks anywhere on standard OR table rail. Snap lock to fit onto side rail at any position. Autoclavable.

Specify Rail Type

US KTEK4600
EU KTEK4610

UK/JP KTEK4620



Simple Blade Clamp

KTEK4700

Mounts and locks anywhere on standard OR table rail ends or at rail notches. A cost effective solution.

Specify Rail Type

US KTEK4700
DY KTEK4730

EU/UK KTEK4710
JP KTEK4740

Accessory Clamp - Round & Rectangular



Round Post Clamp

KTEK4800

Mounts and locks anywhere on standard OR table rail. Accepts round post up to .6875" (1.8 cm) and rectangular post 1 x .25" (2.5 cm x .6 cm). Autoclavable.

Specify Rail Type

US KTEK4800
EU KTEK4810

UK KTEK4820
DY KTEK4830

JP KTEK4840



Stirrups not included

KTEK Stirrup Cart

KTEK1000

Easy to push/pull with ergonomic handles. Cart keeps stirrups secured during transport to prevent damage. Clamp storage compartment. Locking casters prevent cart roll-off.

Cart Height: 40.75" (103.5 cm)

Base Width: 21.625" x 21.625" (54.93 cm x 54.93 cm)

Cart Weight: 35.5 lbs. (16.1 kg)



Patient Safety Strap, Medium

KTEK2601

Gel padded safety strap securely holds patients torso or legs. Attaches to side rail quickly and securely. Compatible with all surgical tables and table extensions with side rails.

Pad center section: .5" x 5" x 18" (1.3 cm x 12.7 cm x 46 cm)

Straps are adjustable from 18" to 45" (45 cm to 114 cm)



KTEK Trigger Armboard

Integrated clamp snap locks onto rail at any position. Designed to prevent fluid ingress. Radiolucent, ultradurable strong material. Eliminates gear grinding and pinch hazards. One-hand adjustable. Pad not included.

Dimensions: 26" x 5.5" (66 cm x 14 cm)

Armboard Weight: 4.0 lbs. (1.8 kg)

Patient Weight Capacity: 500 lbs. (227 kg)

Specify Rail Type

US KTEK2000
EU KTEK2005

UK KTEK2006
DY KTEK2007

JP KTEK2008



KTEK Comfort™ Armboard Pad

Traditional pads with soft pressure relieving foam. Available in various thicknesses. Fits armboards 26" x 5.5" (66 cm x 14 cm). Includes 2 Soft Armboard Straps.

Standard Pad Weight:

.8 lbs. (.36 kg) for KTEK2009/2010

.9 lbs. (.41 kg) for KTEK2015/2016

Specify Pad Size

1" (2.5 cm) KTEK2009
3" (7.6 cm) KTEK2015

2" (5 cm) KTEK2010
4" (10 cm) KTEK2016

Replacement, Soft Armboard Straps

KTEK8310 (12 pack)



KTEK Clamshell Armboard Pad

Integrated clamshell strap safely encapsulates arm. Available in various thicknesses. Fits armboards 26" x 5.5" (66 cm x 14 cm).

Clamshell Padded Area: 10" (25.4 cm)

Clamshell Pad Weight:

.95 lbs. (.43 kg) for KTEK2050/2051

1.0 lbs. (.45 kg) for KTEK2052/2053

Specify Pad Size

1" (2.5 cm) KTEK2050
3" (7.6 cm) KTEK2052

2" (5 cm) KTEK2051
4" (10 cm) KTEK2053



Nissen Straps, Standard

KTEK2603

Used to prevent patient slipping during Steep Reverse Trendelenburg positioning. Mounts to any standard OR Rail.

Patient Weight Capacity: 500 lbs. (227 kg)

WHAT'S INCLUDED



KTEK2603
Nissen Straps, Standard
1 Pair Included

WHAT'S REQUIRED



KTEK4700
Simple Blade Clamp*
2 Required



Nissen Straps, Bariatric

KTEK2602

Patient Weight Capacity: 800 lbs. (363 kg)

WHAT'S INCLUDED



KTEK2602
Nissen Straps, Bariatric
1 Pair Included

WHAT'S REQUIRED



KTEK4700
Simple Blade Clamp*
4 Required



Secondary Shoulder Supports

KTEK2340

Designed to provide non-contact support for extreme Trendelenburg positioning. Flexible swivel adjustment for optimal positioning. Pads included. Sold in pairs.

Patient Weight Capacity: 600 lbs. (272 kg)

WHAT'S INCLUDED



KTEK2340
Shoulder Supports
1 Pair Included

WHAT'S REQUIRED



KTEK4800
Round Post Rail Clamp*
2 Required

*Specify Rail Type: US, EU, UK, JP, DEN. See Page 8.



RECTANGULAR LATERAL POSITIONER



CIRCULAR LATERAL POSITIONER

Lateral Positioning Set

KTEK9100K

Secure and comfortable positioning for procedures requiring total lateral stability. Fully adjustable to any angle. Swivel heads conform to anatomical contours of patient and can be securely locked for precise positioning. No disposable needed. The 3-piece set includes 2 Rectangular and 1 Circular Positioners.

Patient Weight Capacity: 600 lbs. (272 kg)

WHAT'S INCLUDED



KTEK9120
Lateral Positioner,
Rectangle
2 Included

+



KTEK9110
Lateral Positioner,
Circular
1 Included

WHAT'S REQUIRED



KTEK4800
Round Post Rail Clamp*
3 Required

*Specify Rail Type: US, EU, UK, JP, DEN. See Page 8.



Urology Drainage Bags

KTEK8410 Non-sterile (10/box)

KTEK8411 Sterile (10/box)

Disposable surgical fluid drainage bag with a large catch basin and integrated buttocks flap. Works with KTEK Urology Attachment Band.



Urology Attachment Band, US

KTEK8400-K

Flexible band used to support Urology Drainage Bags, reusable. Includes 2 KTEK4700 clamps for US rail.

Dimensions: 45" x 1" x .25" (114 cm x 2.54 cm x .64 cm)

WHAT'S INCLUDED



KTEK8400
Attachment Band
1 Included

+



KTEK4700
Simple Blade Clamp
2 Included for US Rail



Urology Attachment Band, EU

KTEK8401-K

Flexible band used to support Urology Drainage Bags, reusable. Includes 2 KTEK4710 clamps for EU rail.

Dimensions: 45" x 1" x .25" (114 cm x 2.54 cm x .64 cm)

WHAT'S INCLUDED



KTEK8401
Attachment Band
1 Included

+



KTEK4710
Simple Blade Clamp
2 Included for EU Rail



KTEK Armboard, Swivel, Large

KTEK2300

Allows for multi-task positioning of the arms to help prevent potential patient injury. Typical use case for lateral decubitus and prone positions. Pad included.

Armboard Weight: 6.1 lbs. (2.8 kg)

Armboard Post Size: 18.2" x 12.5" x 5/8" (46.2 cm x 31.7 cm x 1.6 cm)

WHAT'S INCLUDED



KTEK2300
Armboard, Swivel
1 Included

WHAT'S REQUIRED



KTEK4800
Round Post Rail Clamp*
1 Required



KTEK Armboard, Swivel, Small

KTEK2304

Allows for effective positioning of the arms to help prevent potential patient injury. Typical use case for lateral decubitus and prone positions. Pad included.

Armboard Weight: 6.0 lbs. (2.7 kg)

Armboard Post Size: 16" x 6.5" x 5/8" (40.6 cm x 16.5 cm x 1.6 cm)

WHAT'S INCLUDED



KTEK2304
Armboard, Swivel
1 Included

WHAT'S REQUIRED



KTEK4800
Round Post Rail Clamp*
1 Required



Side Rail Extender

KTEK2305 (US Rail)

KTEK2306 (EU Rail)

Extend a table rail by: 6" (15.2 cm)

Clamp included. Sold individually.

Dimensions: 8" x 3" x 3" (20 cm x 7.6 cm x 7.6 cm)

Patient Weight Capacity: 800 lbs. (363 kg)

*Specify Rail Type: US, EU, UK, JP, DEN. See Page 8.
Products covered by one or more issued or pending patents.



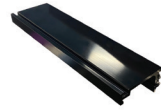
Table Width Extender

KTEK2320

Securely extend the width of OR table by 4"x 20" (10 cm x 50.8 cm), w/side rail. Pad included. US rail only.

Patient Weight Capacity: 800 lbs. (363 kg)

WHAT'S INCLUDED



KTEK2320
Table Width Extender
1 Included

+



KTEK2321
Table Width Extender Pad 2" (5 cm)
1 Included



Arm Protection Shield

KTEK2330

Safely support patients arms, low profile. Pad included.

Dimensions: 11" x 16" x .9" (28 cm x 40 cm x 23 cm)



Flexible Anesthesia Screen

KTEK2501

Coated gooseneck band to create space for anesthesia around patient's head area.

WHAT'S INCLUDED



KTEK2501
Flexible Anesthesia Screen
1 Included

WHAT'S REQUIRED



KTEK4800
Round Post Rail Clamp*
2 Required

*Specify Rail Type: US, EU, UK, JP, DEN. See Page 8.

KTEK™ Spine

Radiolucent. Fabric Free Straps. 600 lbs. Capacity.



- INTEGRATED GEL PADS
- ALLOWS FOR MORE ABDOMEN SPACE



- DURABLE SILICONE STRAPS
- HOOK & LOOP FREE

KTEK Curve™ Spine Frame System

KTEK9000K

Provides a stable platform for spine surgeries including laminectomies, decompressions and disc surgery. Intraoperatively adjustable to the desired height to get optimal surgical site exposure. C-arm compatible. Fits spine table rails and tabletops. Unique silicone straps provides better cleaning vs. hook & loop straps. Pad set included.

Patient Weight Capacity: 600 lbs. (272 kg)

Device Weight: 24.4 lbs. (11 kg)

WHAT'S INCLUDED



KTEK9000
Curve Spine Frame
1 Included

+



KTEK9010
Curve Crank Handle
1 Included

+



KTEK9030
Secure-Lok™ Strap Connector
For use with tables without
side rails. 2 Included

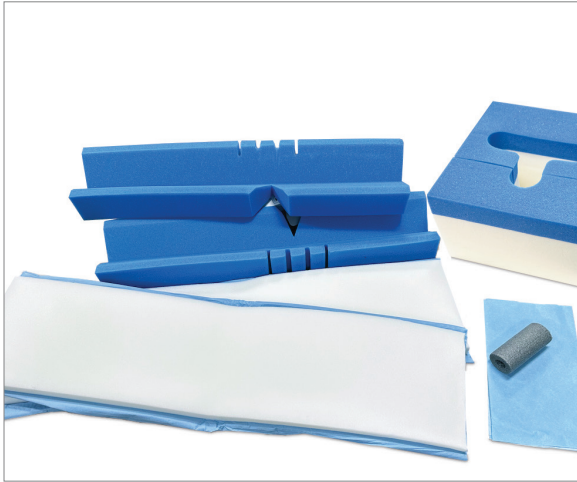
WHAT'S OPTIONAL



KTEK9020
Curve Spine Frame
Comfort Covers Set



KTEK1100
Curve Spine
Frame Cart



KTEK Curve Comfort Cover Set

KTEK9020 (6 pack)

Disposable pack for use with Curve Spine Frame. Includes cosmetic foam pad covers, head block, lateral rod pad and arm cushions.



KTEK Curve Standard Cover Set

KTEK9021 (6 pack)

Disposable pack for use with Curve Spine Frame. Includes standard foam pad covers, head block, lateral rod pad and arm cushions.



KTEK Foam Head Block

KTEK9022 (6 pack)

Provides support, stability, elevation and safe alignment of the head and neck.



KTEK Curve Spine Frame Replacement Pads

KTEK6450-P

Pair of replacement pads for the Curve Spine Frame.
No special tools necessary to remove or attach the pads.



KTEK Curve Crank Handle

KTEK9010

Rotational handle for the Curve Spine Frame to create lordosis.
Machined marked and windowed to help ensure positive connection with the Curve Spine Frame.



KTEK Curve Spine Strap Connector

KTEK9030

Unique tool to secure Curve Spine Frame to tables without side rails.
Sold in pairs.



KTEK Curve Spine Frame Cart

KTEK1100

Easy to push/pull with ergonomic handles. Cart keeps Curve Spine Frame secured during transport to prevent damage. Locking casters.

Cart Height: 40.75" (103.5 cm)

Base Width: 21.625" x 21.625" (54.93 cm x 54.93 cm)

Cart Weight: 35.5 lbs. (16.1 kg)



Arthroscopic Leg Holder

KTEK9200

Arthroscopic knee holder with antimicrobial pads designed for proper patient positioning for knee surgery. Holds leg up to 35" (89 cm) in circumference.

WHAT'S INCLUDED



KTEK9200
Arthroscopic Leg Holder
1 Included

WHAT'S REQUIRED



KTEK4800
Round Post Rail Clamp*
1 Required

+



KTEK8501
Disposable Pad
1 Required



Disposable Pad for Arthroscopic Leg Holder

KTEK8501 (12 pack)

Non-sterile disposable to protect the skin. For use with the Arthroscopic Leg Holder.



Well Leg Holder

KTEK9205

KTEK stirrup boot supports and securely articulates non-operative leg out of working space. Easy to set up and position. Universal design fits left or right leg. Pad included.

Patient Weight Capacity: 600 lbs. (272 kg)

Device Weight: 6.9 lbs. (3.1 kg)

WHAT'S INCLUDED



KTEK9205
Well Leg Holder
1 Included

WHAT'S REQUIRED



KTEK4800
Round Post Rail Clamp*
1 Required

*Specify Rail Type: US, EU, UK, JP, DEN. See Page 8.

Patient Transfer Boards

Patient Transfer Boards are designed to assist hospital staff with moving patients from one location to another. 3 sizes available. Not available in CE countries.

- Roller Free
- Anti-static
- Anti-bacterial
- Anti-fungal
- Latex free
- Flame retardant
- No metal for MRI use



Long Wide Board

KTEK2401

Board Size: 48" x 20" (120 cm x 50 cm)

Board Weight: 3.3 lbs. (1.5 kg)



Short Narrow Board

KTEK2403

Board Size: 40" x 16" (100 cm x 40 cm)

Board Weight: 2.7 lbs. (1.3 kg)



Short Wide Board

KTEK2404

Board Size: 40" x 20" (100 cm x 50 cm)

Board Weight: 3.3 lbs. (1.5 kg)

Index

Armboards

KTEK Trigger Armboard	10
Armboard, Swivel, Large	14
Armboard, Swivel, Small	14
Comfort Armboard Pad	10
Replacement, Soft Armboard Straps	10
Clamshell Armboard Pad	10

Clamps

Secure-Release Clamp	08
Select Blade Clamp	08
Simple Blade Clamp	08
Round Post Rail Clamp	08

Patient Transfer

Premium Transfer Board, Long Wide	20
Premium Transfer Board, Short Wide	20
Premium Transfer Board, Short Narrow	20

Table Accessories

Anesthesia Screen, Flexible	15
Arm Protection Shield	15
Lateral Positioning Set	12
Lateral Positioner, Rectangle	12
Lateral Positioner, Circular	12
Nissen Straps, Bariatric	11
Nissen Straps, Standard	11
Patient Safety Strap, Medium	09
Secondary Shoulder Supports	11
Side Rail Extender	14
Table Width Extender	16

Orthopaedic

Well Leg Holder	19
Arthroscopic Leg Holder	19
Disposable Pad for Arthro Leg Holder	19

Spine

KTEK Curve Spine Frame	16
KTEK Crank Handle	18
KTEK Curve Spine Frame Cart	18
Replacement Pads, KTEK Curve Spine Frame	18
KTEK Curve Comfort Covers, Disposable	17
KTEK Curve Standard Covers, Disposable	17
KTEK Foam Head Block, Disposable	17

Urology

Urology Attachment Band, US	13
Urology Attachment Band, EU	13
Urology Drainage Bags (10/box)	13

Stirrups/Leg Holders

KTEK Comfort Stirrups	05
KTEK 400 Stirrup	06
KTEK 250 Stirrup	06
Knee Crutch, Goepel	07
Simple Stirrups	07
Knee Crutch, Lift Assist	07
Stirrup Cart	09

Increase Your Uptime with KTEK™ Onsite Repair Kits

90% of stirrup repairs can be done at your hospital with easy to use repair kits.



Onsite Repair Kits Reduce Maintenance Costs

KTEK provides reasonably priced repair kits that allows customers to make onsite stirrup repairs 90% of the time.



Online No-Hassle Training

KTEK provides video training that will certify your team at no additional cost.



No Repair Cost Surprises

KTEK provides reasonably priced repair kits which reduce customer's cost of ownership.



Reduce Costly Equipment Downtime

Only KTEK allows your customers to make most repairs on site; reducing costly equipment down time.

KTEK Product Warranty

All KTEK Products are covered by a 2 (two) year warranty except for pads which carry a (1) one year warranty.

KTEK products may be covered by one or more issued or pending patents.

Notes:



GYNECOLOGY • UROLOGY • LAPAROSCOPY • SPINE • ORTHOPAEDICS • ROBOTICS

k•tek™

Kyra Medical, 102 Otis Street, Northborough, MA 01532 USA
ktekmed.com

©2023 Kyra Medical, Inc. All Rights Reserved. KTEK0010-A6-1